

DUST COLLECTORS DC-2

Order Code: (W332)

Edition : 2.0
Date: (8/24)

The following section covers the spare parts diagrams and lists that were current at the time this manual was originally printed. Due to continuous improvements of the machine, changes may be made at anytime without notification.

HOW TO ORDER SPARE PARTS

1. Have your machines model number, serial number & date of manufacture on hand, these can be found on the specification plate mounted on the machine
2. A scanned copy of your parts list/diagram with required spare part/s identified.

NOTE: SOME PARTS MAY ONLY BE AVAILABLE AS AN ASSEMBLY

3. Go to www.machineryhouse.com.au/contactus and fill out the inquiry form attaching a copy of scanned parts list.



WARNING!

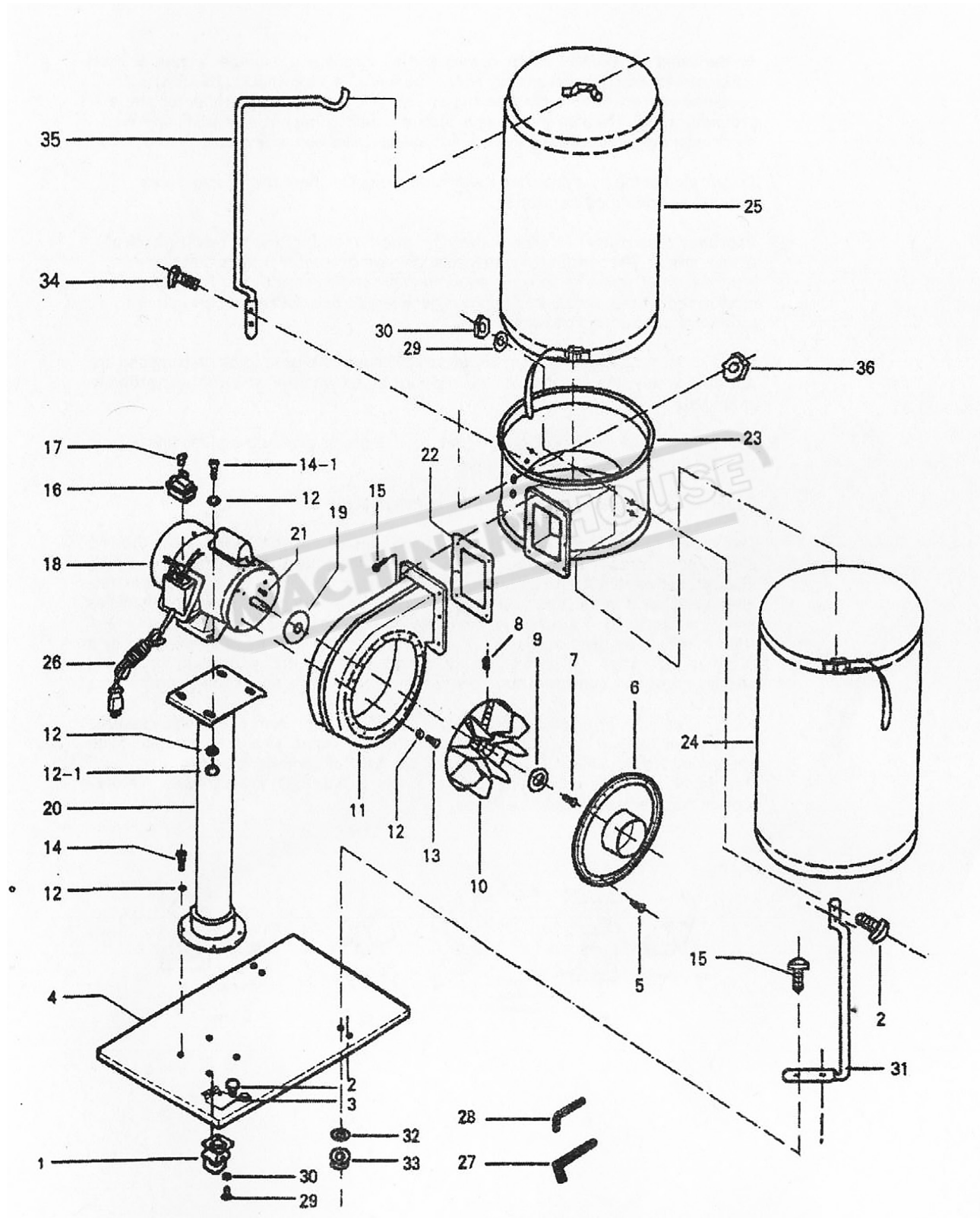
*Electricity is dangerous and could cause death
All electrical work must be carried out by a qualified electrician.*



CAUTION

It is impossible to cover all possible hazards Every workshop environment is different. These are designed as a guide to be used to compliment training and as a reminder to users prior to equipment use. Always consider safety first, as it applies to the individual working conditions.

SPARE PARTS DIAGRAM



SPARE PARTS LIST

| No. | Description | Size | Qty |
|------|----------------------|------------------|-----|
| 1 | CASTER | | 4 |
| 2 | SCREW PAN. HD. | M5 x 16 | 20 |
| 3 | SPRING WASHER | Ø5 | 16 |
| 4 | BASE PLATE | | 1 |
| 5 | SCREW PAN. HD. | M5 x 10 | 12 |
| 6 | INLET COVER | | 1 |
| 7 | SCREW HEX. SOC. HD. | M6 x 20 L (L.H.) | 1 |
| 8 | SET SCREW SOC. HD. | M8 x 10 | 2 |
| 9 | WASHER | | 1 |
| 10 | TURBO FAN | | 1 |
| 11 | COLLECTOR BODY | | 1 |
| 12 | WASHER | Ø8 | 16 |
| 12-1 | NUT | M8 | 4 |
| 13 | SCREW HEX. HD. | M8 x 10 | 4 |
| 14 | SCREW HEX. HD. | M5 x 15 | 4 |
| 14-1 | SCREW HEX. HD. | M8 x 15 | 4 |
| 15 | SCREW HEX. FLG. HD. | M6 x 15 | 10 |
| 16 | SWITCH | | 1 |
| 17 | KEY SWITCH | | 1 |
| 18 | MOTOR | | 1 |
| 19 | PACKING | | 1 |
| 20 | COLUMN & MOTOR PLATE | | 1 |
| 21 | KEY | 5mm x 5mm x 30mm | 1 |
| 22 | PACKING | | 1 |
| 23 | COLLECTOR | | 1 |
| 24 | COLLECTOR BAG | | 1 |
| 25 | FILTER BAG | | 1 |
| 26 | POWER CORD | | 1 |
| 27 | WRENCH HEX | 4mm | 1 |
| 28 | WRENCH HEX. | 5mm | 1 |
| 29 | SPRING WASHER | Ø5 | 16 |
| 30 | NUT | M5 | 20 |
| 31 | BRACKET | | 2 |
| 32 | WASHER | Ø6 | 4 |
| 33 | NUT | M6 | 4 |
| 34 | SCREW | M4 x 5 | 2 |
| 35 | POLE | | 1 |
| 36 | NUT | M4 | 2 |

NOTE: SOME INDIVIDUAL PARTS MAY ONLY BE AVAILABLE AS AN ASSEMBLY